

**INSTALLATION MANUAL: GPP Honda CIVIC TYPE-R 2017+ FK8 Front Bumper Bar**  
**Part Number: 14258003**

**Installation Manual**

Please read the entire manual before installing this kit.



## Parts List

- |                            |     |
|----------------------------|-----|
| 1. GReddy front bumper bar | x 1 |
| 2. Block-off plates        | x 2 |
| 3. Rubber end caps         | x 2 |
| 4. Vibration loop clamp    | x 1 |
| 5. M5 x 16mm hex bolt      | x 1 |
| 6. M5 flange nut           | x 1 |

### PRODUCT DISCLAIMER

Use and installation of GReddy Performance Products may not meet the legal requirements for usage on public roads and/or highways. It is the purchaser and/or installer's responsibility to check local, state and Federal laws to make sure this product complies prior to installation. Installation may also void factory or supplemental vehicle warranties, and may affect insurance claims. Please consult with respective representatives prior to installation.

## Installation

**Caution: When removing stock parts, make sure you read the factory repair manual for proper procedures.**

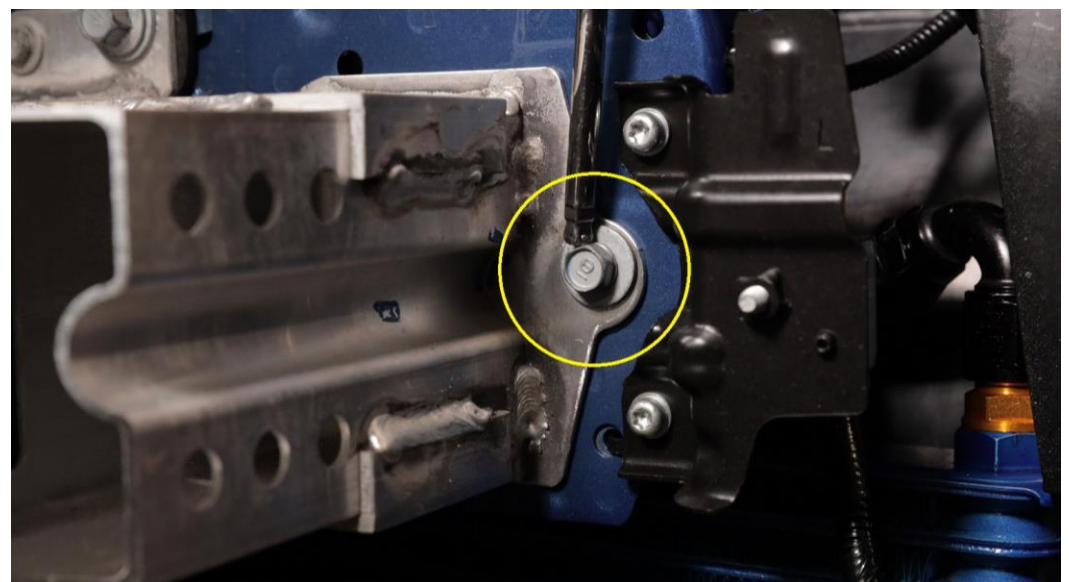
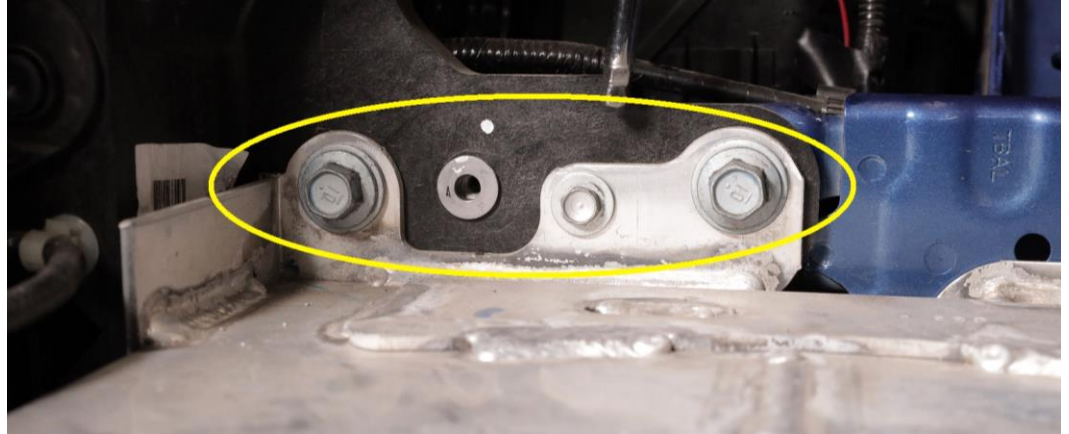
### 1. Stock Parts Removal

- 1.1 Disconnect the negative side of the battery.
- 1.2 Remove the front bumper.
- 1.3 Remove both headlights.

### 2. Remove factory bumper reinforcement beam.

3. There are eight M10 bolts and two M8 bolts in total that will need to be removed to pull off the beam. These bolts are circled in the pictures

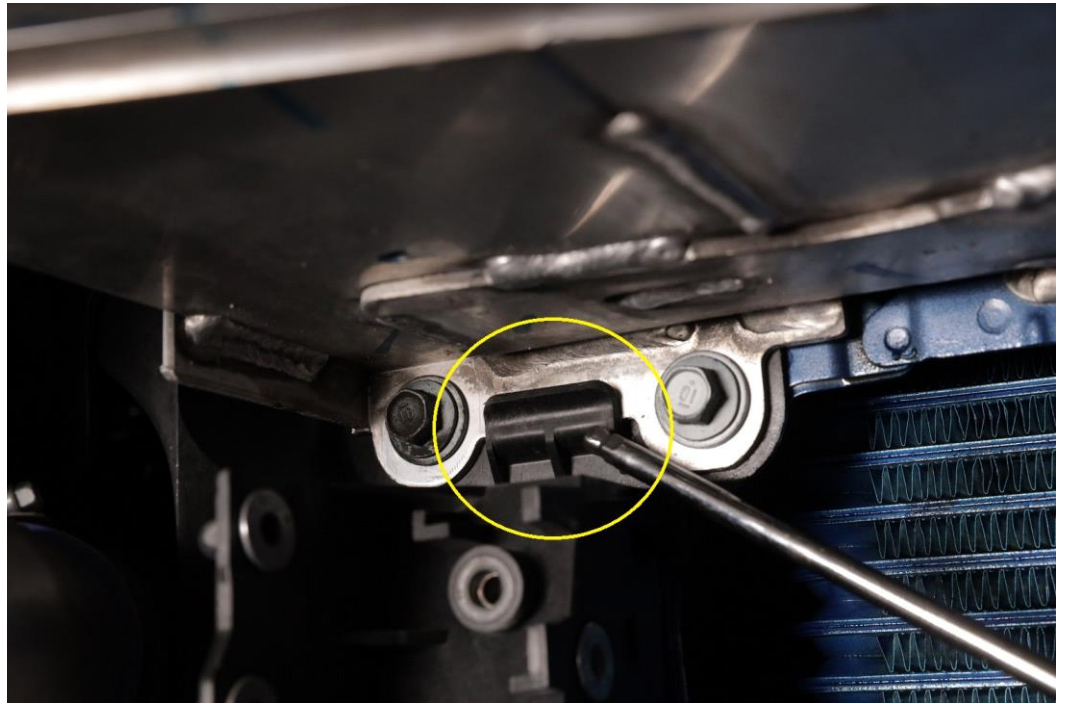
below. All of the bolts will be reused except for the two M6 bolts.



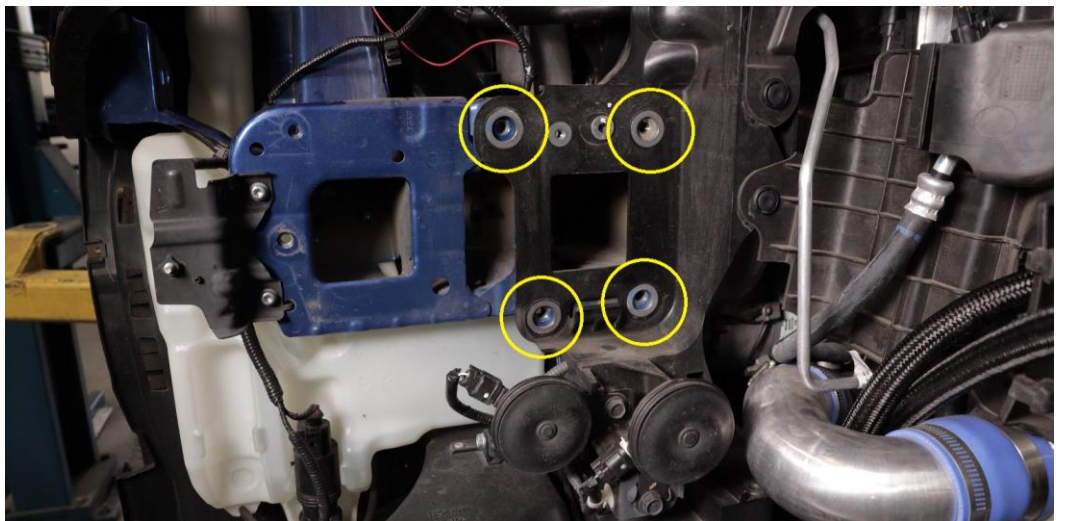
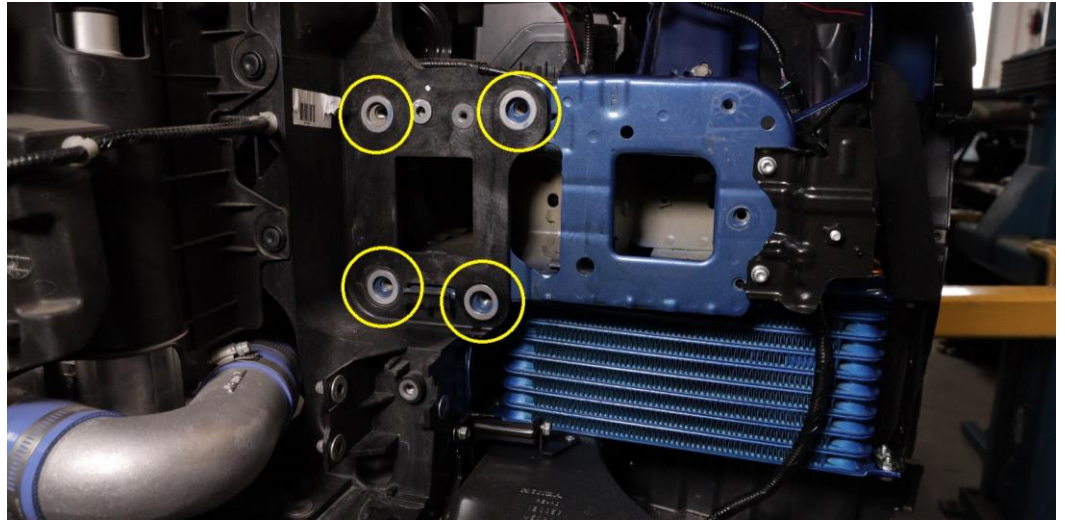
## Bar Installation

3.1 Rest the GReddy front bumper bar on the hooks on each side to hold the bar up while you reinsert the OEM bolts.

(Parts used #1)



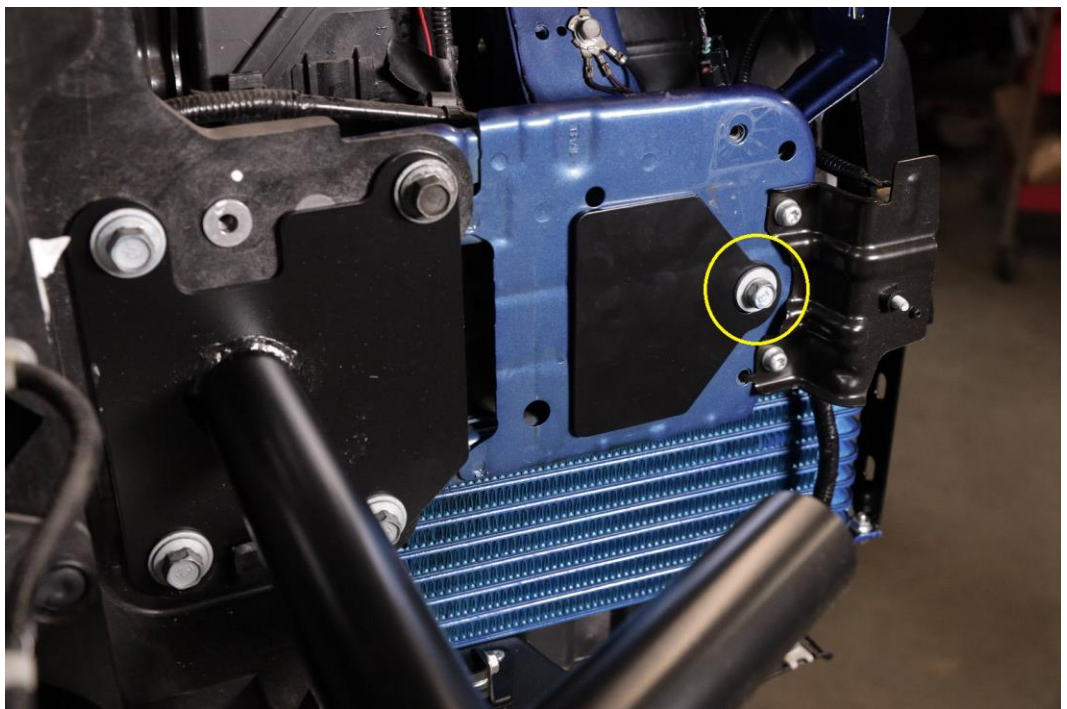
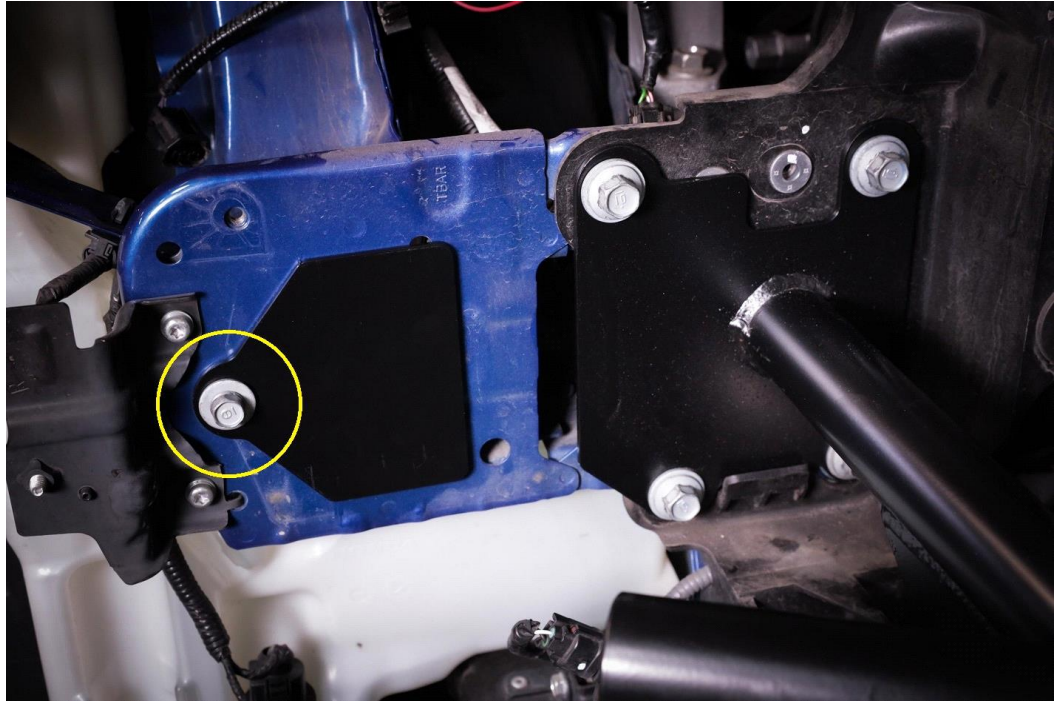
3.2 The bar itself will only use eight of the M10 bolts, 4 on each side. The two M6 bolts will not be reused. The holes you will be using to mount the bar are circled in the picture below.





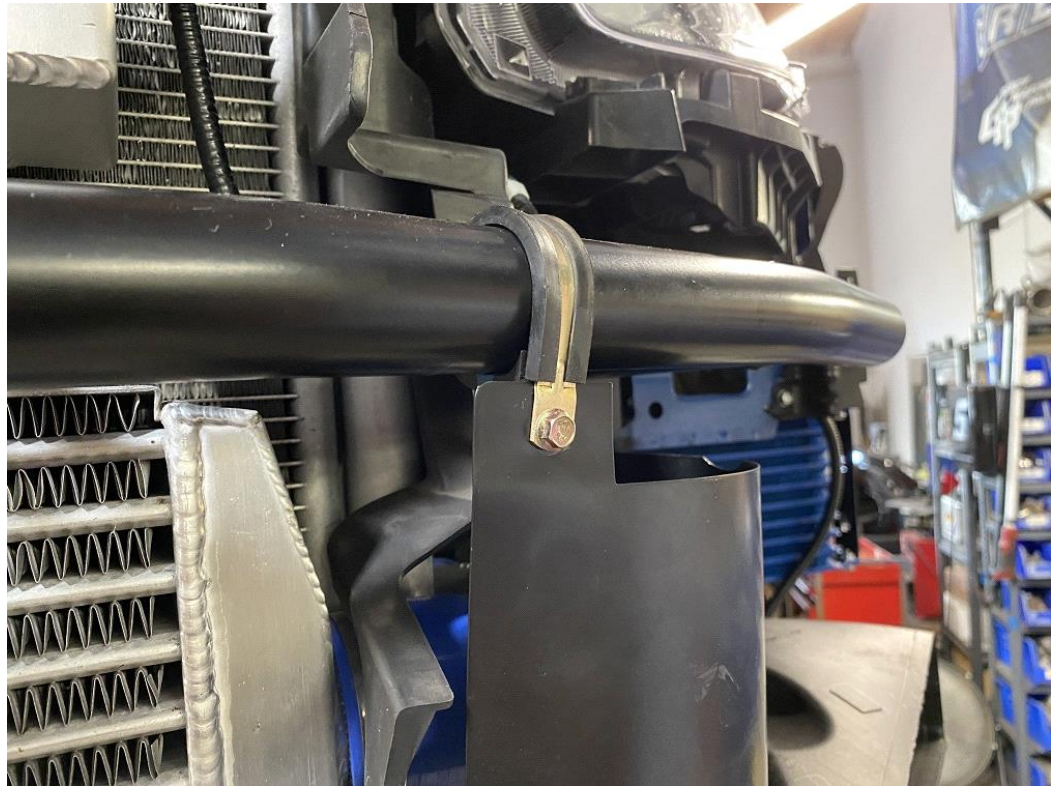
3.3 Place the block off panels over the large holes and screw the two remaining M8 bolts into the chassis like in the pictures below.

(Parts used #2)



3.4 If you are using the GReddy side mount oil cooler or transmission cooler then you will need to use the vibration loop clamp to attach to the air diversion panel. Slip the clamp over the bar with the flat side of the clamp facing forward. Using the M5 bolt and nut, secure the diversion panel to the vibration loop clamp.

(Parts used #4, 5, 6)



#### 4. Installation inspection

- 4.1 Check and make sure all the nuts and bolts are tight.
- 4.2 Make sure the end caps are pressed all the way onto the bar.

#### 5. Stock Parts reinstall

- 5.1 Reinstall the factory parts in the order they were removed by following factory procedures.
- 5.2 Reconnect the negative terminal of the battery.

**Installation is complete.**

If you have any further question regarding installation or this product, please feel free to contact your GReddy Authorized dealer or GReddy Performance Product, Inc.