

TRUST SUPER TUNING SYSTEM AIMING AT REAL COMPETITIONS.

600^{cc} WARNING METER

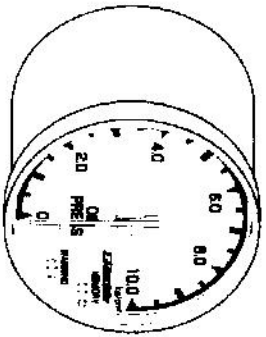


Instruction Manual

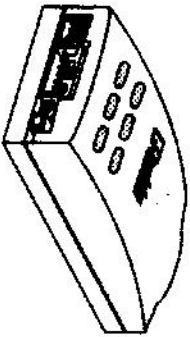
TRUST CO., LTD.

MADE IN JAPAN.

Parts List:



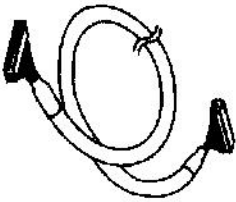
[1] Oil Press Meter
1pc.



[2] Data Link Unit
1pc.



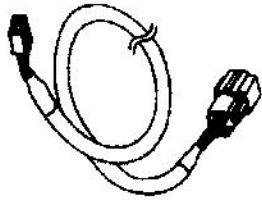
[3] Pressure Sensor
1pc.



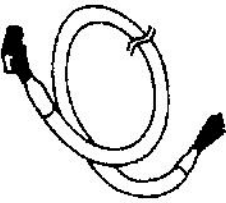
[4] Meter Harness 2m
1pc.



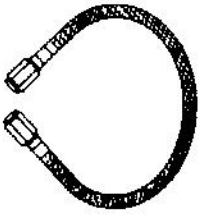
[5] Hose Fitting 1pc.



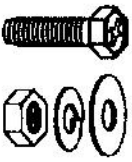
[6] Sensor Harness 2.5m
1pc.



[7] Electrical Harness 0.5m
1pc.

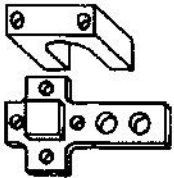


[8] Braided Lane 0.5m
1pc.



[9] Bolt, Washer,
Split-washer,
and Nut
1pc.

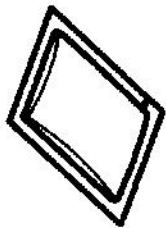
Parts List:



[10] Sensor Bracket
1pc.



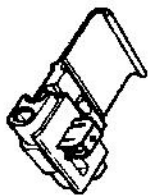
[13] Wire Tie 15cm
4pcs.



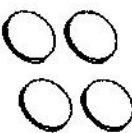
[11] Mounting Cleaner
(for double-sided tape)
1pc.



[14] Harness Label Set
1pc.



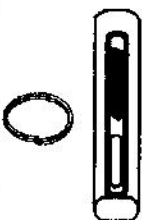
[12] Electrical Tap
4pcs.



[15] Double-sided Tape
1pc.



[16] Instruction Manual



[17] Warning Adjusting Socket Tool
1pc.

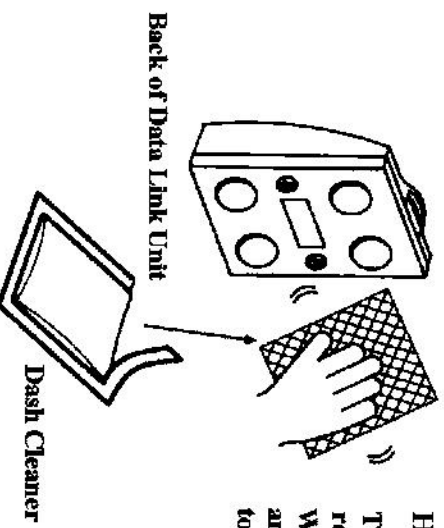
Installation:

Data Link Unit Mounting

When using the provided double-sided tape to mount the data link unit, clean the mounting surfaces with the provided dash cleaner

⚠ Caution

- ⚠ Do not use the dash cleaner on any other products.
- ⚠ If there is dirt, dust, or oil on the mounting surface, the double-sided tape may not adhere to the dash.



How to use:
Tear the silver package open and remove the dash-cleaner.
Wipe the back of the data link unit and the dash surface, to be mounted to.

Installation:

Meter Mounting

! Important

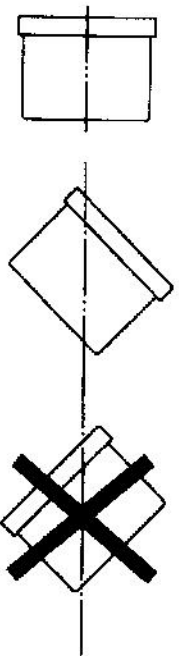
- ! When looking for a location to mount the meter, be sure not to have the meter interfere with the driver's view of the road or other important instruments.

Note

Mounting brackets for these warning meters are available for simple installation.
(GReddy Meter Band 369601 or GReddy Meter Holder 369602)

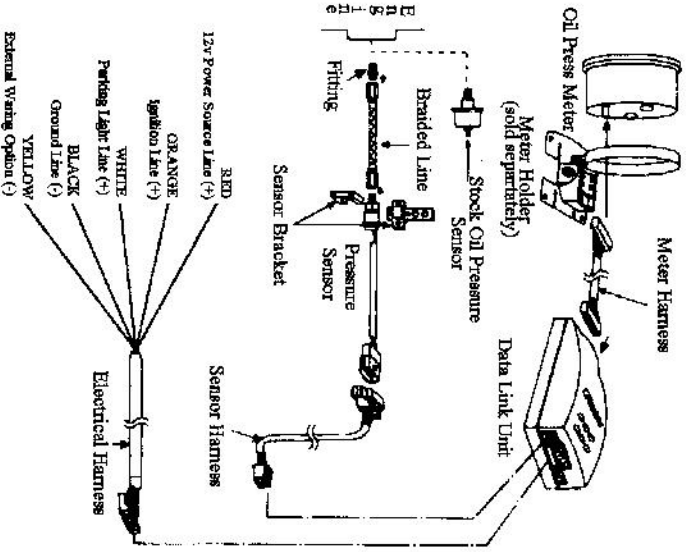
⚠ Caution

- ⚠ Never mount the meter facing downward. Always mount the meter horizontally or facing upward. Mounting the meter facing downward can cause the meter to malfunction.



Installation:

Wiring Diagram



Attention
 During installation, make sure to use the provided Teflon tape to prevent oil leaks. Oil leaks could cause small fires and/or engine damage.

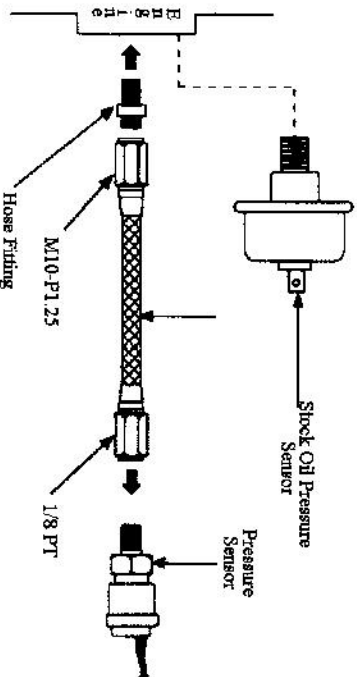
Installation:

Option #1

Sensor Installation (Stock Oil Pressure Replacement)

Caution

- ⚠️ Avoid mounting the sensor in a location where the sensor could get wet or hot.
- ⚠️ Make sure the sensor and the sensor harness is away from the ignition system. (i.e. ignition coil box) Noise (signal) from the ignition system may cause the meter to display faulty readings.

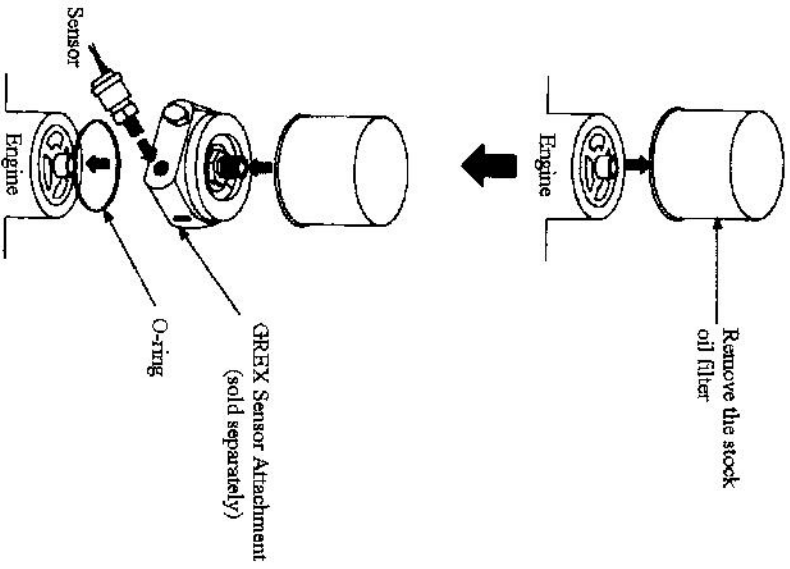


- Remove the stock oil pressure sensor and install the provided hose fitting.
- Connect the braided line to the pressure sensor.
- The braided line has different ends; make sure the 1/8 PT end goes to the sensor and the M10-P1.25 end goes to the hose fitting.
- Connect the braided line to the hose fitting.
- Mount the sensor using the provided bracket.
- It is ideal to mount the sensor so the wire end faces upward.

Installation:

Option # 2

Sensor Installation (Using GREX sensor attachment unit) *Sold Separately*

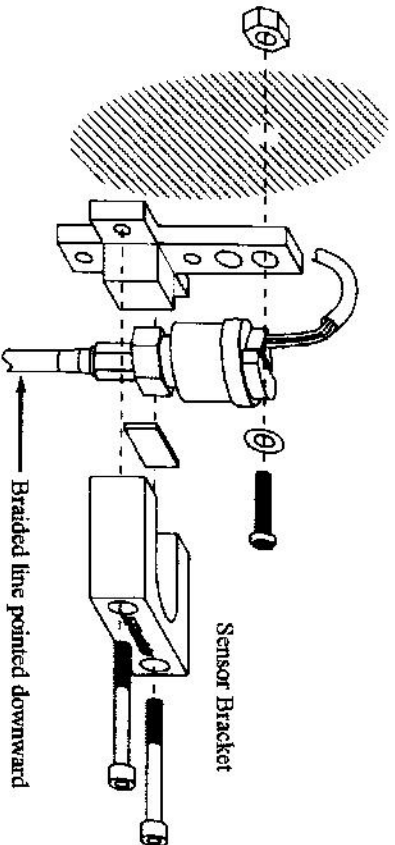


Important

If you are using the GREX Oil Cooler Kit, the pressure sensor can be directly installed to the oil block of the oil cooler kit.

Installation:

Sensor Mounting

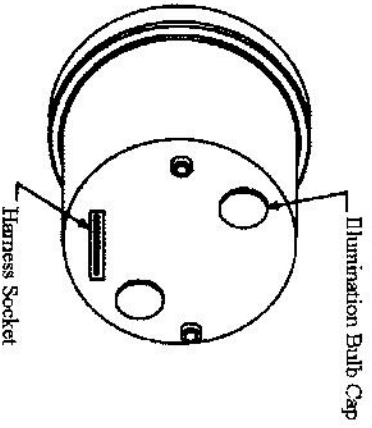
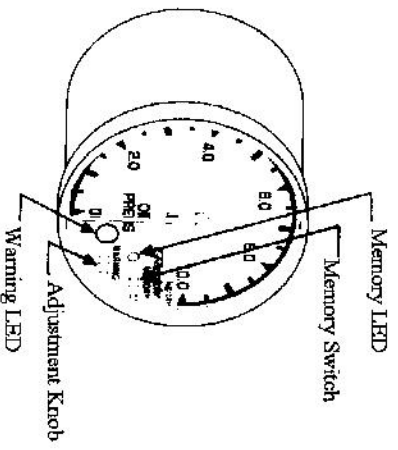


Find a good location to mount the sensor bracket. The location should be a place where it is cool and dry.

Mount the sensor to the bracket as shown above.

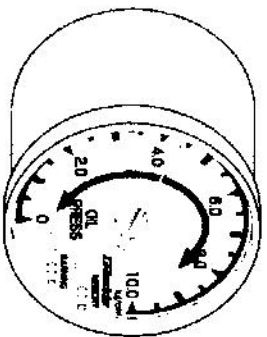
Always have the braided line pointing downward as shown above.

Operation:



- **Memory Switch**
 - Used to switch to "Peak" mode
 - Used to reset the memory
- **Memory L.E.D.**
 - Illuminates
 - Flashes when resetting the memory
- **Adjustment Knob**
 - Used to adjust the warning point (setting)
- **Warning L.E.D.**
 - Illuminates when in the warning mode
 - Flashes when the harness is disconnected or when there is a "short" in the electrical system

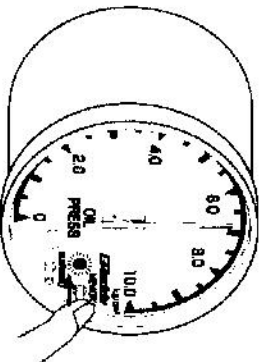
Operation:



Real-time Meter Mode:

Displays the oil pressure reading

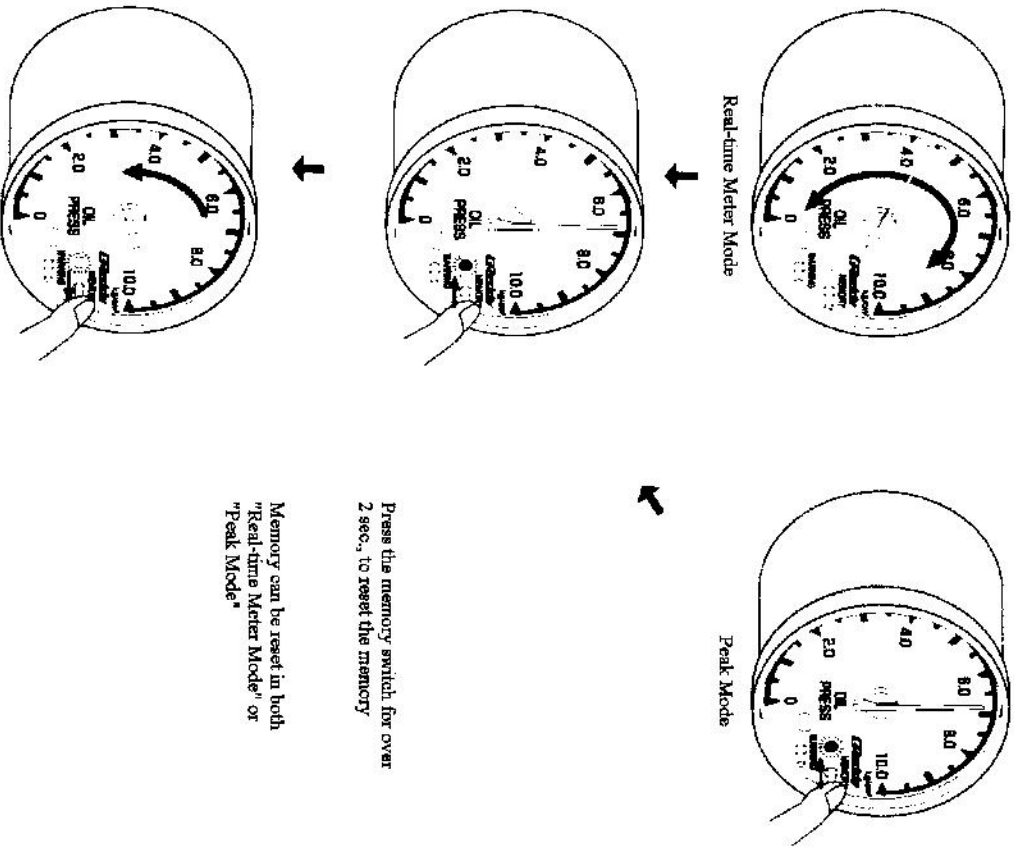
Peak Oil Pressure Mode:



Press memory switch momentarily to get into "peak mode"
When "peak mode" is turned on, the memory LED will illuminate and the meter will display the peak temperature achieved.
Press the memory switch again, to return to "real-time mode"

Operation:

Resetting the Memory

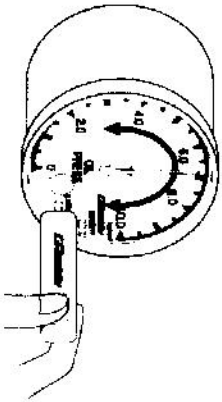


Press the memory switch for over 2 sec., to reset the memory

Memory can be reset in both "Real-time Meter Mode" or "Peak Mode"

Operation:

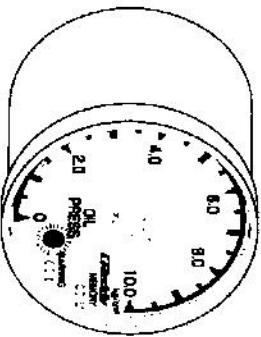
Setting the Warning Point



To set the warning point, use the provided socket tool to turn the Adjust Knob to the desired warning value

After making the adjustment, wait for 5 sec. and the meter will program the new setting and return to "Real-time Meter Mode"

Warning Mode



When the needle of the meter reaches the programmed warning point, the "Warning LED" (and optional warning light and/or buzzer) will activate. This will remain until the needle rises above the warning point.

⚠ Caution

- ⚠ Do not adjust the Warning Point when Driving.
- ⚠ Always remove the adjusting socket tool after making adjustments

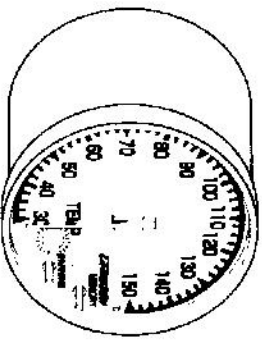
Operation:

Check Mode

Bad Harness Connection Check Feature

When there is a bad sensor or ground connection, the warning LED will flash quickly.
(flash, flash -- flash, flash -- flash, flash)

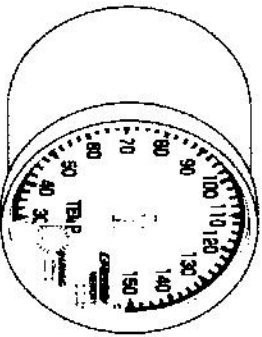
This feature does not check the connection on the power harness.



Short Circuit Check Feature

When there is a short circuit in the sensor or harness, the warning LED will flash slow.
(flash -- flash -- flash -- flash)

This feature does not check for short circuits on the power harness.

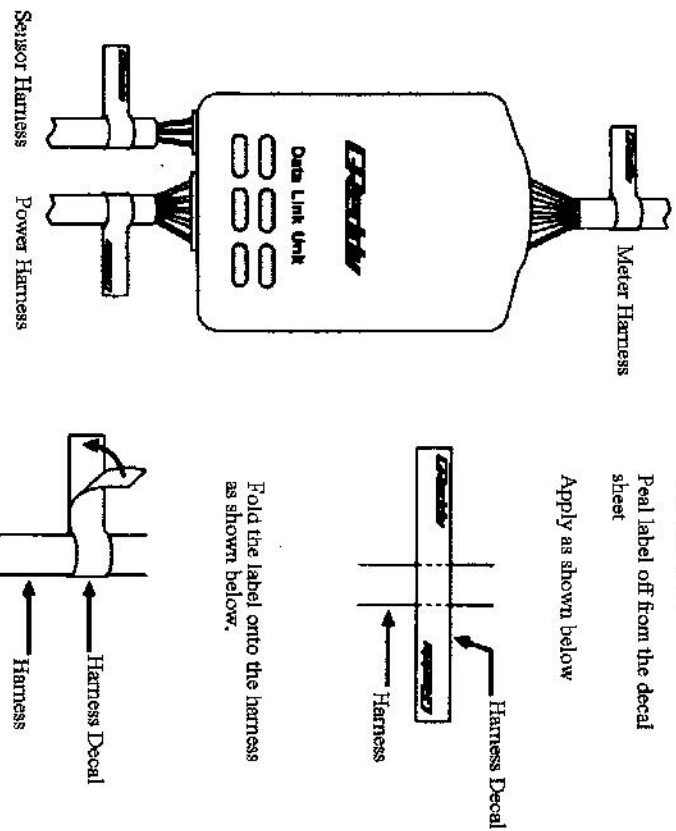


Suggestions:

How to use the Harness Labels

If you are installing more than one warning meter, it is suggested to use the provided decal set to label each of the harness for each individual meter type.

The decal set includes three labels: 1) Meter harness 2) Sensor Harness 3) Power Harness. Install as shown below.



How to apply:
Peel label off from the decal sheet

Apply as shown below

Fold the label onto the harness as shown below.